

R I D E T H E

Golden Wave

42'

The Golden Wave 42.

If you are a yachtsman with a taste for superlatives, with a knowledge and appreciation of the finest sailing yachts made; if your dream yacht bears the name Swan or Baltic or Bowman and your needs will be satisfied only when you are the owner of the best among them, you owe it to yourself to examine the Golden Wave 42. She is more than exceptional.

She is a serious yachtsman's dream and one of the most exciting 42' sailing yachts in the world.

She has the style, character and excellence of the world's finest yachts yet she is offered at barely half the price.

Robert Perry—Designer

Robert Perry was not the only designer to submit a design for the Golden Wave 42, he was one of many.

When Golden Wave Shipyards first set out to create the ultimate 42', a select handful of naval architects were consulted. Of these a few were invited to submit designs of the "ideal 42' sailing yacht" and Robert Perry's was superior to all the rest.

His knowledge of style and performance, combined to produce what we believe to be the definitive 42' sailing yacht of all time.

So, to the discriminating yachtsman, it is with pride and pleasure that Golden Wave Shipyards introduce to you the Golden Wave 42.

An exceptional creation.

Performance

The feel of the helm of the Golden Wave 42 must be experienced. She has a light, definite touch which responds immediately. She moves smartly in the lightest of breezes and is strong enough to handle the roughest conditions. Close hauled she is swift and keen and quick to come about, and before the wind in all her glory there are none that can compare.

Part of this exceptional performance is due to the design of the rugged fiberglass hull which features a modified fin keel, folding propeller and NACA rudder which makes her aquadynamically one of the finest, fastest production hulls ever made. The rest is attributable to her sail plan which is equally unique.

Sail and Deck Plan

Kenyon aluminum tapered spars and 885 square feet of sail all contribute to the Golden Wave 42's incredible sailing ability. The placement of her jib and ready access of sheets in the cockpit together with 11 Barient winches (most are self tailing), Navtec rod-rigging and Navtec hydraulics, adds to the ensemble effect of a perfectly tuned luxury racer cruiser. The cockpit is exceptionally large and comfortable, designed to facilitate great sailing and easy living. There is storage for docking fenders and extra sails. The 48' wheel and steering system is from Yacht Specialties and provides for exceptional feel and control.

In every way the Golden Wave 42 looks, feels and performs like a thoroughbred. She is designed for true sailors, for men of the sea who understand the exceptional and will settle for nothing less.

Golden Wave



611-12



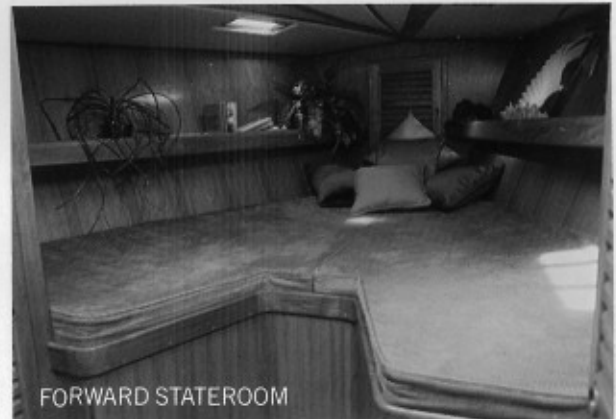
GALLEY



HEAD



MAIN SALON



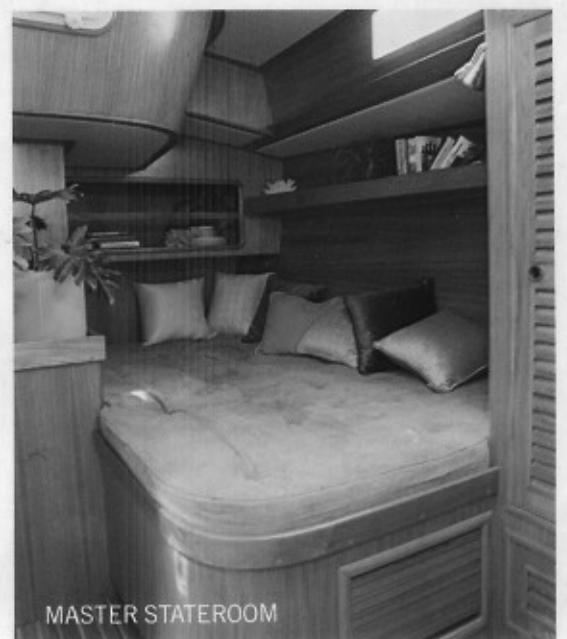
FORWARD STATEROOM



NAVIGATION AREA



MAIN SALON



MASTER STATEROOM

A new standard of excellence.

Luxury Below

The same thought that has gone into the construction and design of her hull and exterior is evident in the layout below.

Hand rubbed teak is luxuriously apparent throughout, impeccably matched with exceptional joinery.

Begin with the aft master stateroom. Located to port it is extremely large with a full sized double bed, an abundance of storage, hanging locker, drawers, bookshelves and the attention to detail that will please the most demanding connoisseur.

The head, immediately adjacent to the master stateroom, is large and attractive complete with toilet, ss sink, medicine cabinet, vanity and extremely large stall shower. There is access from both the main companionway and the master stateroom.

Starboard, opposite the master stateroom is a private navigation area with a large chart table, overhead lighting, chart storage and room for the most complete and thorough collection of electronics the owner may require.

Farther forward is the galley designed as a seagoing kitchen with thought given to those days when you have to prepare food under adverse conditions. There is plenty of counter space, a

double ss sink, a large ice box suitably insulated for conversion to refrigerator and/or deep freeze, and loads of storage space for food, dishes, pots and pans.

contoured dining settee, adjustable high/low table (which converts to a large double bed) and facing settee furnish this rich and very special grand salon.

Forward is a second stateroom large and airy, with deck prisms and lavish teak which give it a character and flavor unique in yachts of this size.

Four large aluminum hatches and ports make the Golden Wave 42 cool and well ventilated on the hottest days.

All in all she is truly a special yacht, comparable in design, construction and workmanship only to the finest sailing yachts in the world.

Value

Perhaps the most outstanding characteristic of the Golden Wave 42 is value. Because of its exceptional construction, because of the care and time and hand crafting that defines this unique craft, its resale value will always be one of the highest in its class.

Impressive?

It should be.

But don't take our word for it.

See for yourself.

Discover the value of the Golden Wave 42, the finest new sailing yacht on the market.

The Builders

The Golden Wave Shipyards have been building fiberglass yachts for decades. They have more experience than nearly every manufacturer of production sailing yachts. Their combined decision to concentrate only on the production of the best has put them in a very special and elite class.

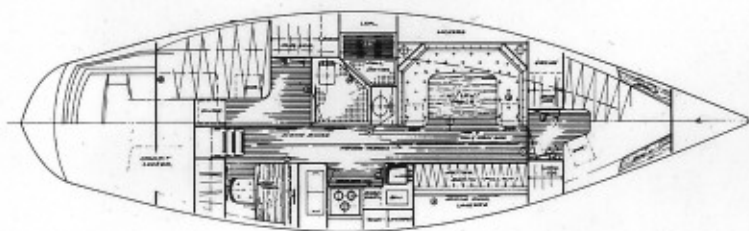
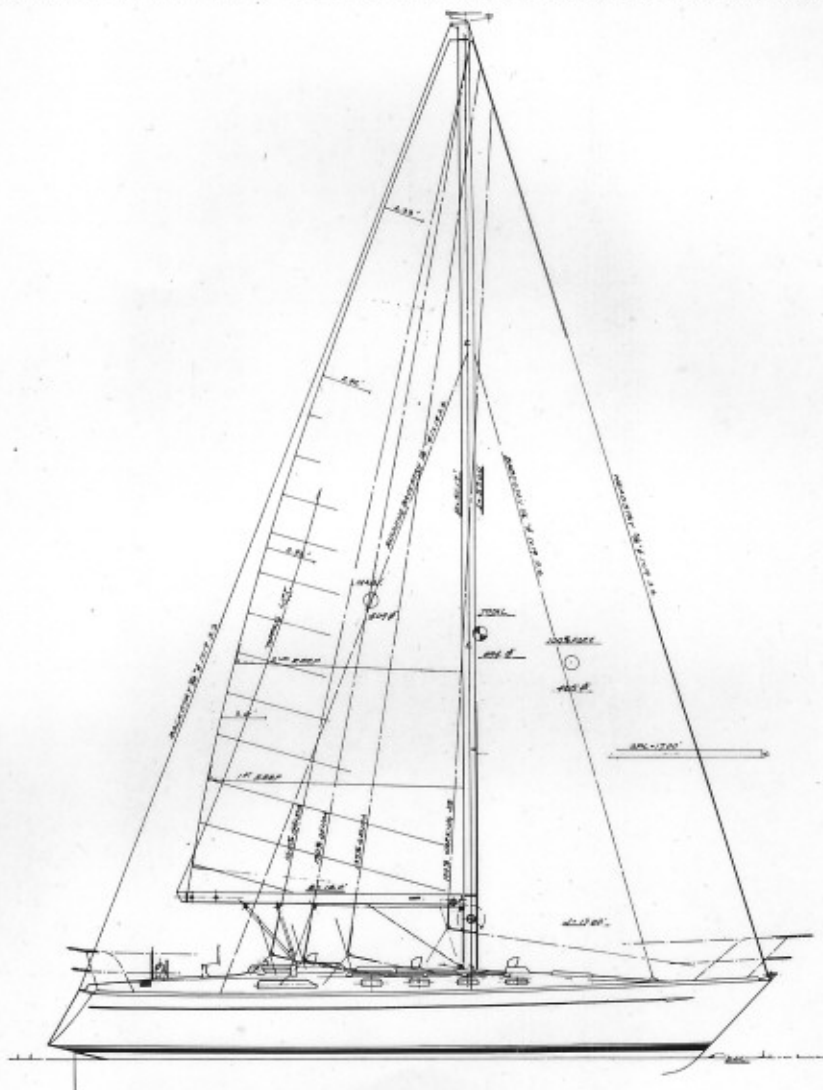
The Golden Wave 42 is, without question, the finest sailing yacht money can buy. And its price makes first hand investigation a necessity for the serious yachtsman.

S P E C I F I C A T I O N S

Length overall	42'0"
Waterline length	34'4"
Beam	12'8"
Draft	6'2"
Displacement	25,000 lbs.
Fuel capacity	55 gal.
Water capacity	120 gal.

STANDARD EQUIPMENT:

- Kenyon aluminum tapered spar
- Internal Halyards
- Eleven barient winches
- Full spinnaker gear, including pole
- Slab reefing
- Navtec hydraulic backstay adjuster
- Navtec rod riggings and turnbuckles
- Perkins 4-108 diesel engine
- Folding racing prop
- Raritan automatic battery charger
- Six aluminum opening ports
- Sampson yacht braid sheets and halyards
- Giot aluminum racing toe rail and fairleads
- All hatches opening aluminum
- Stainless steel genoa and jib tracks
- Stainless steel sheet protectors over Dorade vents
- Teak deck overlaid on fiberglass on main deck and cockpit
- On-deck life raft storage under helmsman's seat
- Stainless steel stem head fitting with double rollers to accept two anchors
- Stainless steel bow pulpit, stern pulpit and stanchions
- Double life lines with opening gates
- High aspect ratio double spreader rig
- Racor fuel filtration system on engine
- Shower sump tank
- Holding tank for head
- Contoured cockpit seating
- Completely bonded lightning protected electrical system
- Extremely strong and able construction
- Two vented fiberglass propane lockers
- Yacht Specialties steering system with 48" wheel
- Lavish, hand-rubbed, all-teak interior



Golden Wave Shipyard Ltd.

863 Lai Chi Kok Road, P.O. Box 10391, Cheungshawan P.O. Kowloon, Hong Kong. Telex HX 56361 CLS.

Specifications are subject to change without notice. Photographs and illustrations may include certain optional items. The right is reserved to make changes at any time without notice in prices, specifications, standard equipment, materials and models.