

CheoyLee
FINE YACHTS



Trawler 32

CHEOY LEE SHIPYARDS, LTD.

863-865, Lai Chi Kok Road, Kowloon, Hong Kong.
P.O. Box 10040 Cheungshawan, Kowloon, Hong Kong.
Telephones: 3-716841-4 Telegram: "CHEOYLEE HONGKONG" Telex: HX 86361 CLS



Trawler 32



L.O.A..... 31'11"
 L.W.L..... 29'6"
 Beam..... 12'0"
 Draft..... 4'5"
 Dispt..... 19,000 Lb.
 Fuel Cap..... 360 U.S.G.
 Water Cap..... 200 U.S.G.
 Power... Ford 120 HP Dies
 Cruising Range (App.)
 1,000 miles at 7-8 Kts

Dealer:



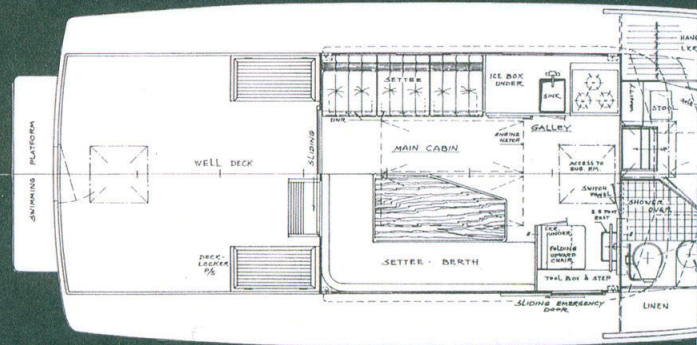
T

Another new...
 This time it...
 who want a...
 offers ample...
 traditional C...
 in the teak...
 and even in...
 steel hardwa...
 As with all...
 saloon, from...
 windows, or...
 instruments...
 The forward...
 provides con...
 which conver...
 The "open-p...
 steel sink and...
 The self-drai...
 pleasant plac...
 For sun-bath...
 handy transo...

The photos on this panel, taken by available natural light, show how spacious, light and airy the deck saloon is.

Closing the door to the cockpit shuts out the elements and air-conditioning, with a generator set to drive it, can be installed at option, together with an electric stove with oven and a refrigeration unit in the ice box.

And, of course, you can have all the usual electronic navigational aids you require installed to order.





Trawler 32

Model from Cheoy Lee.

Our "big-little" trawler for those yachtsmen who want a smaller boat which, small size notwithstanding, has a lot of head and elbow room and also still retains the Cheoy Lee high quality craftsmanship so evident in the furniture and trim, the parquet cabin soles and our legendary teak decks and stainless steel

For trawlers, you can "drive" this one from the steering position in the cockpit which vision has been enhanced by the adoption of curved corner windows from the flying bridge where there is a duplicate set of controls and, of course, unobstructed vision in all directions.

The cabin with its attached toilet/shower room and large locker space offers comfortable sleeping accommodation for two. By lowering the saloon table, the settee into a double bed, two more can sleep there.

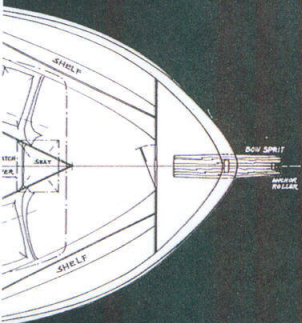
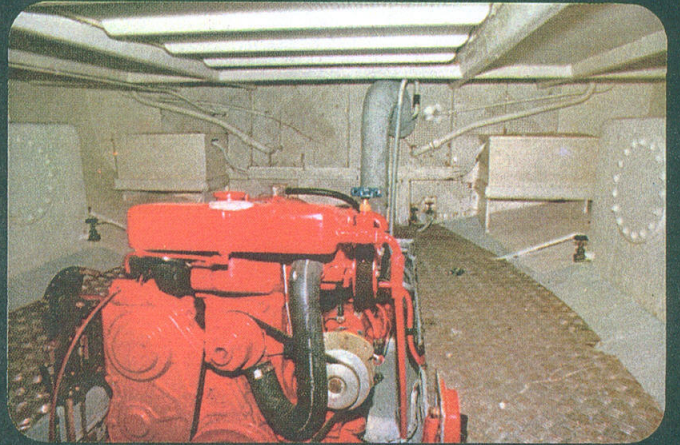
The galley has a four-burner-and-oven gas stove, a sensible sized stainless steel working top with a large ice box below.

The cockpit can be fitted with an awning if required and then forms a comfortable sitting out in the shade.

As there is the fore deck, cabin top and flying bridge. Swimmers have a platform with access gate from the cockpit.

The 120hp Ford diesel ensures a crisp 9-knot performance and the 440 gallon fuel capacity is sufficient for about 600 miles even at full power and over 1000 miles at 7-8 knots.

As the photo shows, there is plenty of room for working on and around the engine, or you can have twin 75hp ones if you prefer.



The illustrations and descriptions given in this sheet, which may include certain optional items, are intended as a general guide only, and must not be taken as binding. The Shipyard reserves the right to make, at any moment and without notice, any changes it thinks necessary to improve the craft and its appearance or to meet any requirements of manufacturing or commercial nature.